



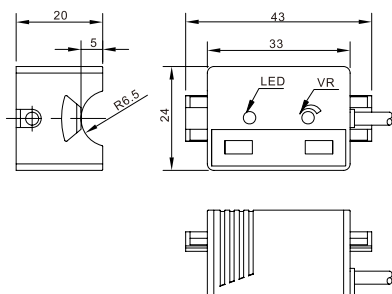
Appearance		
Mounting	Unshielded	
Operating voltage	10~30V DC	
Load Current , Max	< 200mA	
Voltage drop	< 2.5V	
No-load supply current	< 15mA	
Hysteresis	3~20%	
Repeat accuracy	< 3%	
Switch frequency	20Hz	
Indicator	Yellow LED	
Material	Nonmetal	
Pipeline	External diameter	$\phi 8 \sim \phi 11$
	Wall thickness	< 1mm
Protective circuit	Reverse polarity/Short circuit	
Ambient temperature	-25°C~+70°C	
Degree of protection	IP67	
Housing material	PBT	
Connection	2mPVC Cable	
Model No.	NPN Normally open	CE15-13 N O
	Others	N O :NPN Normally open N C :NPN Normally closed P O :PNP Normally open P C :PNP Normally closed

- Fiber Optic
- Slot Type
- Photoelectric
- Laser
- Proximity**
- Displacement
- Magnetic
- Contact
- Light Curtains
- Ultrasonic
- Connectivities
- Tester

Dimensions (Unit:mm)

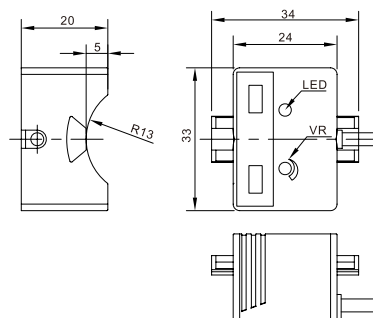
CE15

CE15-13 □ □



CE30

CE30-26 □ □



Guidance

Rule of Completion

Inductive Sensors

- Upgraded Type
- Standard Distance
- Extended Distance
- Long Distance
- Square
- Mini Square
- Mini-Cylindrical
- Short-Body
- Ring-Type
- Metal Factor-1
- Ferrous Detection
- Aluminum Detection
- Metal Face
- Weld Field Immune
- High-sealing
- Temperature
- High Pressure
- NAMUR
- Analog Output
- DC 2 Wires

Capacitive Sensors

- Cylindrical
- Corrosion Resistant
- Flat Type
- Level Detection**